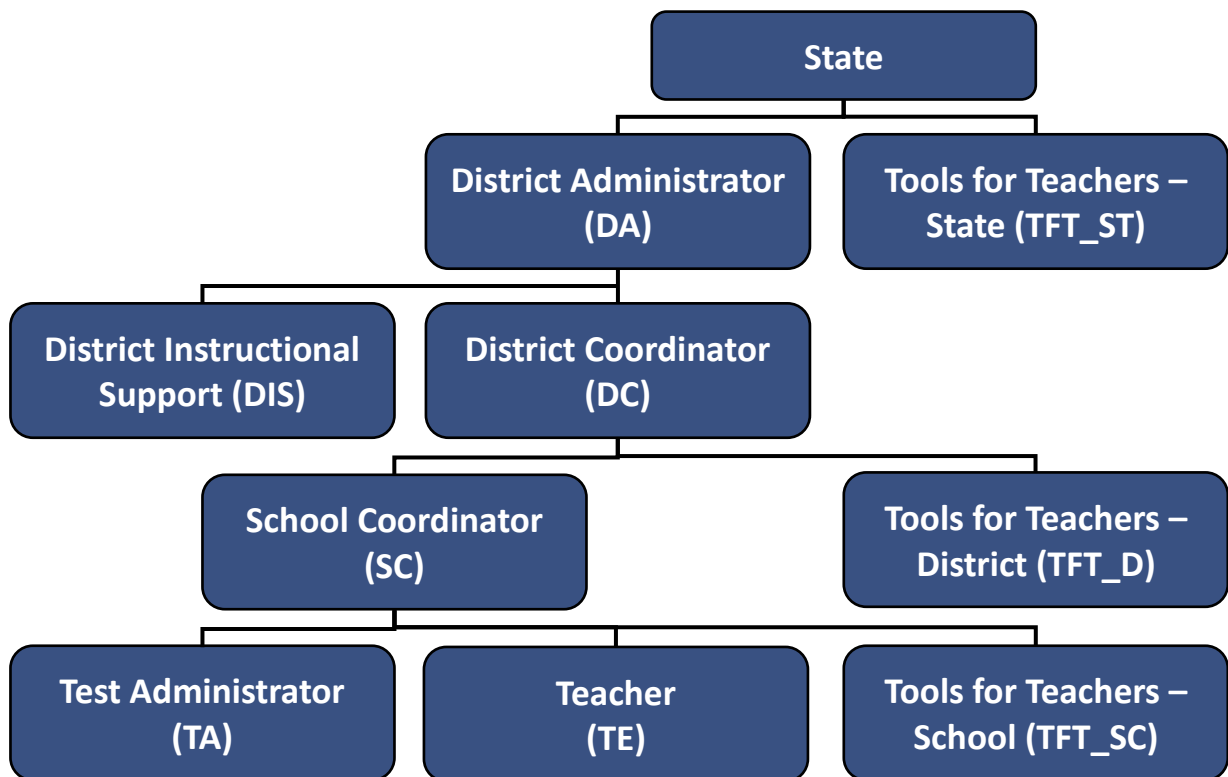


## SY2020-2021 Idaho Assessment Systems & User Roles

- These are the Idaho Assessment Systems for school year 2020-2021.

<b>Test Information Distribution Engine (TIDE)</b>	A registration system for users to prepare for, administer, and clean up data after testing.
<b>Test Delivery System (TDS)</b>	The online platform used by TAs to certify for and then administer interim and summative tests.
<b>Reporting</b>	The online platform used to finalize and analyze student performance data gathered during interim or summative testing.
<b>Assessment Viewing Application (AVA)</b>	An online platform that can be used to securely view the items on the ELA/L, Math and Science interim assessments.
<b>Authoring</b>	An online platform that can be used to create & share test questions.
<b>Tools for Teachers (TFT)</b>	The online repository of instructional material and formative assessment strategies.
<b>Interim Assessment Item Portal (IAIP)</b>	Within Tools for Teachers, a DA, DC, SC, TE or TA can easily find, access, and export relevant interim assessment test items.

- This model illustrates the hierarchy of Idaho Assessment System user roles. Users with a higher role, will have access to different tasks and can grant access to **connected** user role(s) underneath.



- This table lists a few Idaho positions and an example Idaho Assessment System user role.

<b>Instructional Coach</b>	DIS	<b>Principal</b>	SC
<b>Capacity Builder</b>	DIS	<b>Superintendent</b>	DC

# 2020-2021 User Roles and Access to Idaho Assessment Systems

This table provides a brief overview of CAI's systems and which users can access each system and the features/tasks within each system. For TIDE, features are referred to by their corresponding tab. The corresponding user guide for each system contains complete information about each system's features.

- **Note:** \*DA, DC, and SC users can only view, add, or modify the users in their district and/or school who have a lower role level. For example, DAs cannot add or modify other DA users, and SCs cannot add or modify other SCs or any district-level user.
- Tools for Teachers (TFT) users only have access to tools for teacher and they may be associated to a certain school or district.
  - TFT-D for district users
  - TFT-SC for school users

	District Administrator (DA)	District Test Coordinator (DC)	District Instructional Support (DIS)	School Test Coordinator (SC)	Teacher (TE)	Test Administrator (TA)	Tools for Teachers District/School (TFT-D & TFT-SC)
<b>Test Information Distribution Engine (TIDE)</b>							
<b>Administration Tasks</b>							
My Account	■	■	■	■	■	■	■
<b>Manage Students</b>							
Add Students	■	■		■			
Upload Interim Grades	■	■		■	■	■	
Upload Students via a File Upload	■	■					
Upload Test Settings and Tools	■	■		■			
View/Edit/Export Students	■	■		■	▣	▣	
Move Students	■	■					
Delete Students	■	■		■			
<b>Manage Users</b>							
Add Users	■	■		■			
Upload Users	■	■		■			
View/Edit/Export Users	■	■		■	▣	▣	
Delete Users	■	■		■			
<b>Manage Rosters</b>							
Add Rosters	■	■		■	■		
Upload Rosters	■	■		■	■		
View/Edit/Export Rosters	■	■		■	■		
<b>Test Improprieties</b>							

	District Administrator (DA)	District Test Coordinator (DC)	District Instructional Support (DIS)	School Test Coordinator (SC)	Teacher (TE)	Test Administrator (TA)	Tools for Teachers District/School (TFT-D & TFT-SC)
Create/Upload Test Impropriety Requests	■	■		■			
View Test Impropriety Requests	■	■		■	■	■	
<b>Documenting Non-Participation with Special Codes</b>							
Viewing and Editing a Student's Special Codes	■	■		■	▣	▣	
<b>Test Progress Management</b>							
Plan and Manage Testing	■	■		■	■	■	
Test Completion Rates	■	■		■	■	■	
Test Status Code Report	■	■		■	■	■	
<b>Test Delivery System (TDS)</b>							
<b>Which system(s) can users access?</b>							
TA Certification Site	■	■		■	■	■	
Test Administrator Sites	■	■		■	■	■	
Data Entry Interface (DEI)	■	■		■	■	■	
<b>Reporting</b>							
Scoring Access				■	■		
Test Reason Manager Access			■	■	■		
<b>Authoring</b>							
Create, Upload, and Edit Standards	■	■					
Administer Teacher-Authored Tests	■	■		■			
Manage Subjects	■	■					
<b>Tools for Teachers</b>							
Tools for Teachers Site Access	■	■		■	■	■	■
Interim Assessment Item Pool Access	■	■		■	■	■	

■ Full access; ▣ View and Edit