

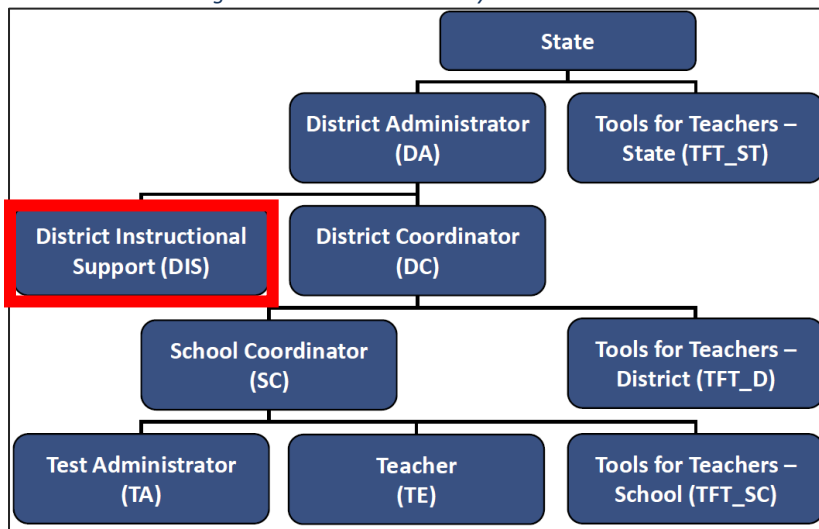


FAQ

New User Role- District Instructional Support (DIS)

As of October 2020, Idaho’s Assessment System has a new user role; District Instructional Support (DIS). The graphic below demonstrates how the new role aligns to current roles available in the system.

Figure 1: Idaho Assessment System User Roles



1. Who was this role designed for?
 - a. This role was designed for statewide support who work across many districts (Capacity Builders, ELA/Literacy Coaches, Regional Mathematics Specialists, and Science Coaches).
2. Who adds DIS users into TIDE?
 - a. Idaho State Department of Education Assessment & Accountability Department will facilitate the initial provisioning by distributing, collecting, and sending to DTC’s the signed Assessment Confidentiality Agreements from every coach and Capacity Builder (CB).
3. What security measures must be in place for a DIS to be added as a user?
 - a. All DIS users must read and sign the SDE [Assessment Confidentiality Agreement](#) annually. DTC’S must collect and maintain the signed agreement for two years.
4. What is the purpose of this new role?
 - a. The DIS user role will give CBs, ELA/Literacy Coaches, Regional Mathematics Specialists, and Science Coaches the ability to access to district-level student performance data. This will empower CBs and Coaches to better assist teachers in understanding & connecting performance data to refining instructional practices
5. Can districts assign staff users to the DIS role?
 - a. The DIS role is best suited to statewide support who work across districts and schools.

For additional information on user roles refer to Idaho’s User Role document.